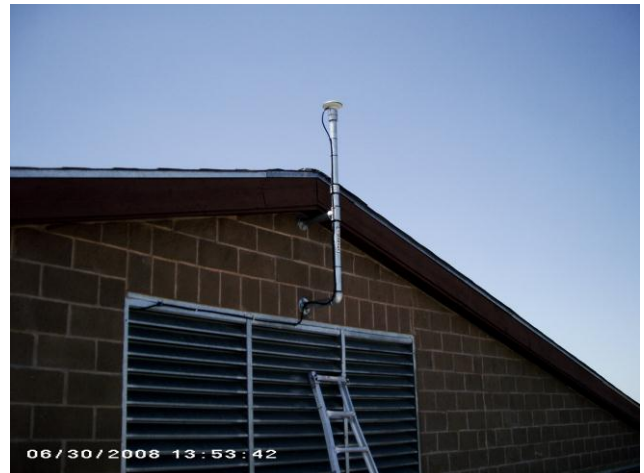


GPS REAL TIME REFERENCE NETWORK

A GPS real time reference network across Cheyenne and Laramie County was established in 2008 and is an extension of the SmartNet North America. This network uses Leica Geosystems technology and is accessible by subscription.

Station hosts include the City of Cheyenne, Gilchrist Elementary School (Laramie County School District #1), Burns Jr/Sr High School (Laramie County School District #2) and Chugwater Schools (Platte County School District).



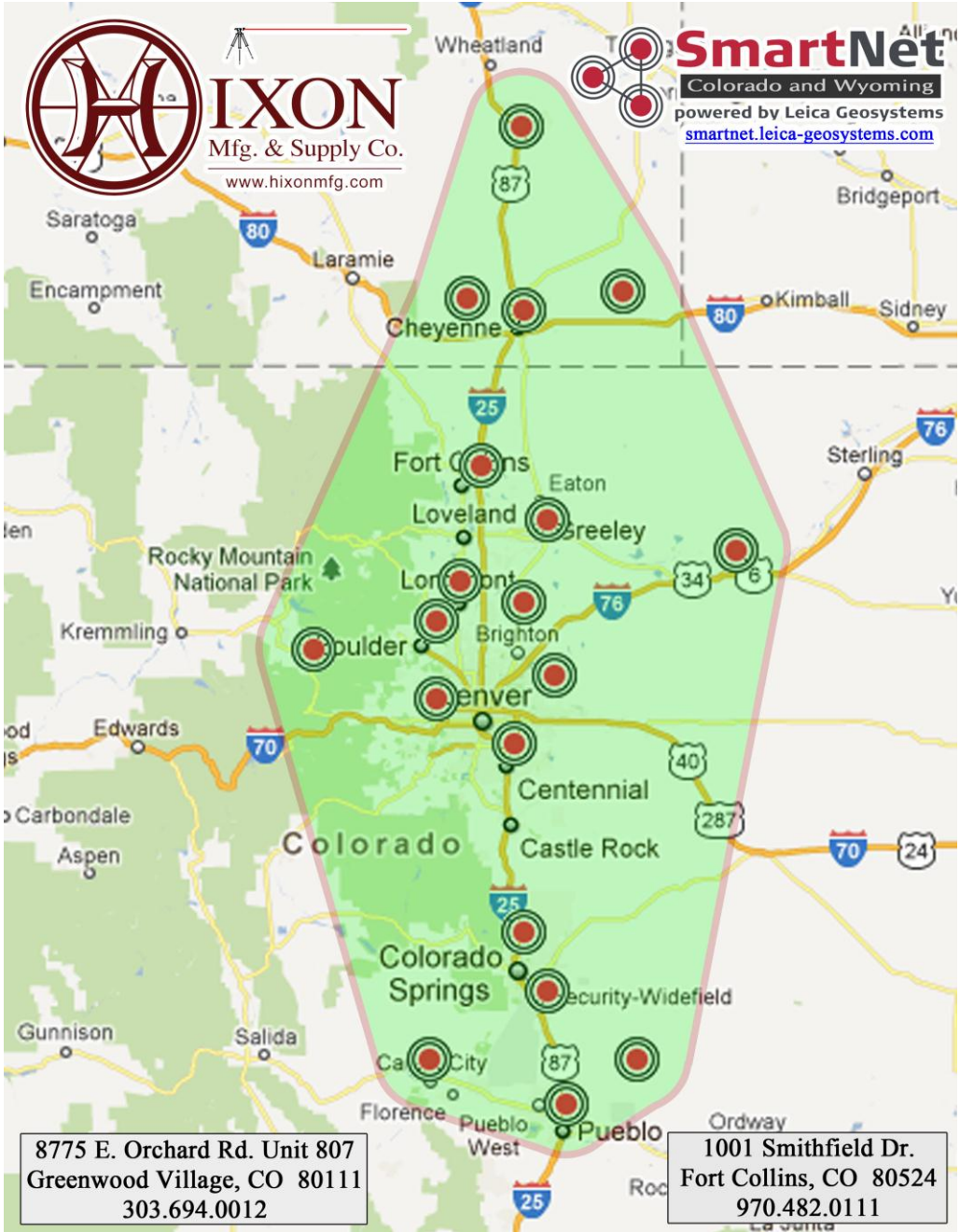
Management of this portion of the network is through Hixon Mfg. & Supply of Fort Collins, Colorado. Access to the network can be arranged by contacting them at www.hixonmfg.com.

Contact the GIS Cooperative Coordinator to obtain further details or Hixon Mfg. for subscription information.



HIXON
Mfg. & Supply Co.
www.hixonmfg.com

SmartNet
All-in-One
Colorado and Wyoming
powered by Leica Geosystems
smartnet.leica-geosystems.com



8775 E. Orchard Rd. Unit 807
Greenwood Village, CO 80111
303.694.0012

1001 Smithfield Dr.
Fort Collins, CO 80524
970.482.0111